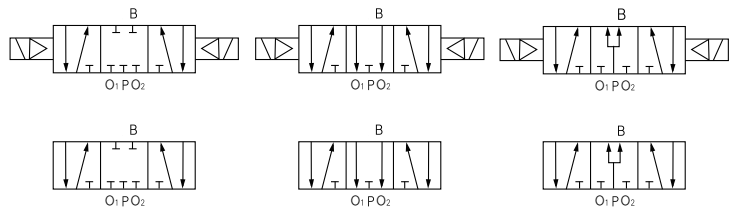


# K 系列滑柱式电磁阀 Series Spool Valve

## K35 系列三位五通滑柱式换向阀 Series 5/3 ways spool valve



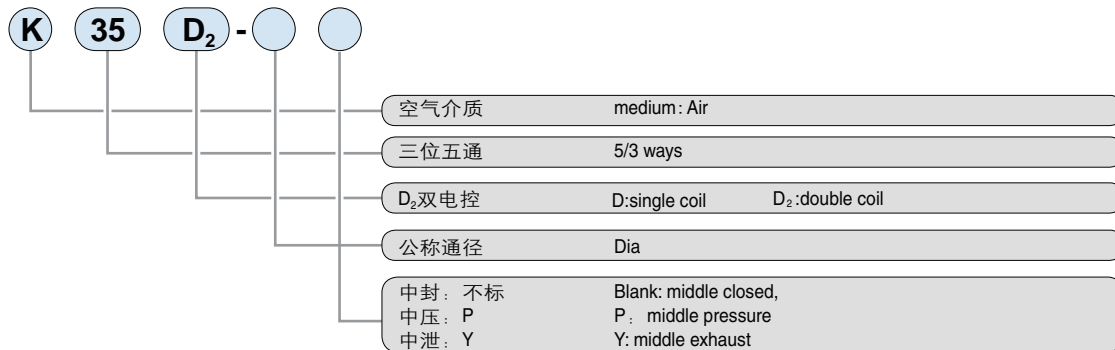
### 图形符号 symbols



### 产品特点 Features

该阀是具有三个位置的换向阀，其中位分三种型式：  
(a) 中位封闭式，(b) 中位泄压式，(c) 中位加压式。  
This directional valve has 3 position, three type as follow:  
(a) middle closed, (b) middle exhaust, (c) middle pressure

### 型号注释 Order Code

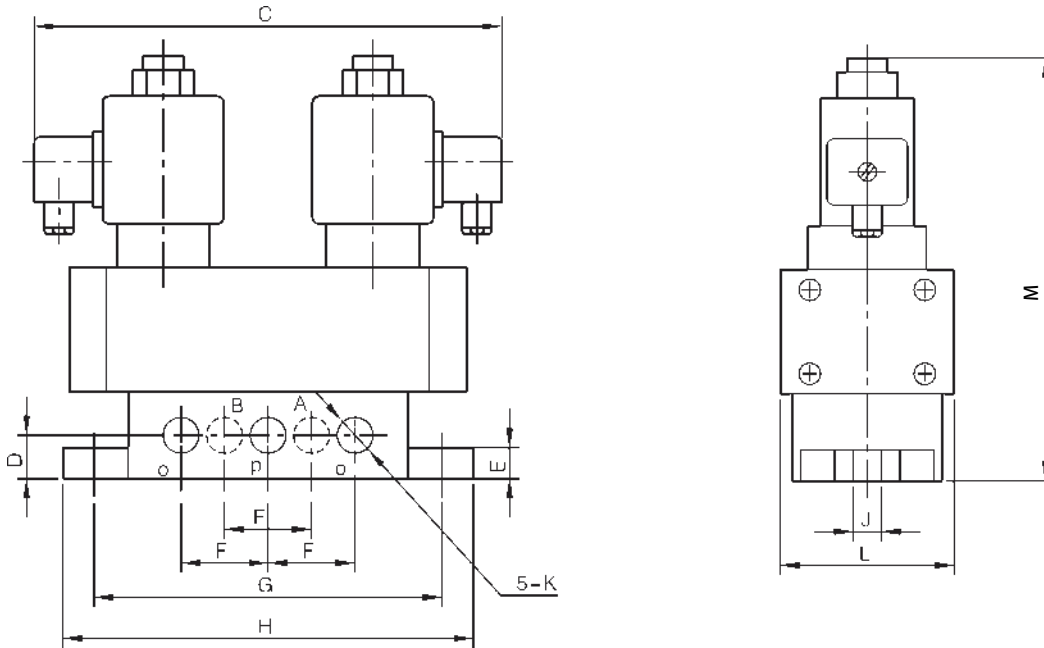


### 技术参数 Specification

型号 Type	K35HD <sub>2</sub> -6(Y)(P)	K35HD <sub>2</sub> -8(Y)(P)	K35HD <sub>2</sub> -10(Y)(P)	K35HD <sub>2</sub> -15(Y)(P)	K35HD <sub>2</sub> -20(Y)(P)	K35HD <sub>2</sub> -25(Y)(P)
参数 parameter						
公称通径 Dia(mm)	6	8	10	15	20	25
工作压力范围 Working pressure range(Mpa)	0.2-0.8				0.15-0.8	
泄漏量 Leakage rate(mL/min)	50		120		250	
换向时间 Reversing changing time(sec)	≤0.06		≤0.06		≤0.06	
切换频率 switch-over frequency(Hz)	≥8		≥6		≥4	
环境温度 ambient temperature (°C)	-5-50		-5-50		-5-50	
介质温度 Medium temperature (°C)	0-50					
有效截面积S值 Effective sectional area S value(mm <sup>2</sup> )	10	20	40	60	110	190
寿命(万次) Working life (10K times)	≥150		≥150		≥150	
电压 Voltage(V)	电控: AC220、110、36 DC48、24、12 [电压波动允许范围/range+10%~-15%]					
电磁先导阀公称通径 Nominal passage dia of solenoid pilot (mm)	1.2		2		3	

**K** 系列滑柱式电磁阀  
Series Spool Valve

外形尺寸 Outlook & Dimension



型号 type	接管螺纹 K threads	C	D	E	F	G	H	M	J	L
K35D <sub>2</sub> -6[Y、P]	G1/8(M10×1)	153	14	10	28	112	130	136	9	56
K35D <sub>2</sub> -8[Y、P]	G1/4(M12×1.25)									
K35D <sub>2</sub> -10[Y、P]	G3/8(M16×1.5)	184	19	14	38	143	164	159	9	74
K35D <sub>2</sub> -15[Y、P]	G1/2(M20×1.5)									
K35D <sub>2</sub> -20[Y、P]	G3/4(M27×2)	254	25	15	60	202	234	229	11	112
K35D <sub>2</sub> -25[Y、P]	G1 (M33×2)									