

# DF-W 系列 联锁阀

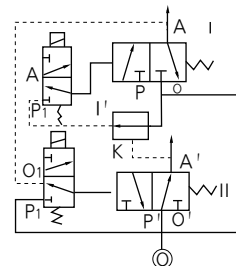
## Series Locked Solenoid Valves

### DF4-20/25W 系列反联锁电磁阀

#### Series solenoid safe valves



#### 图形符号 symbols

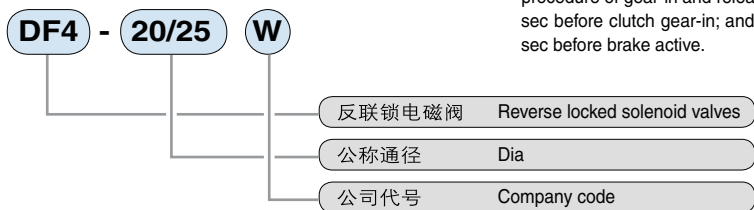


#### 产品特点 Features

DF4-W反联锁阀是控制压力机制动器、离合器正常工作的一种专用气动元件。它保证离合器与制动器必须保持一定的结合和脱霸载顺序号，即在压力机起动时，制动器必须首先脱开0.03秒。然合离合才能结合；在压力机停车时，离合器必须首先脱开0.01秒，然后制动器动作。该阀反应灵敏、动作可靠。

DF4-W reverse locked solenoid valve is exclusive pneumatic elements controlling the actions of the brake and clutch of a press. It ensure that clutch and brake maintain a certain procedure of gear-in and release, i.e. when press starts the brake shall first release for 0.03 sec before clutch gear-in; and when the press stops, the clutch shall first release for 0.01 sec before brake active.

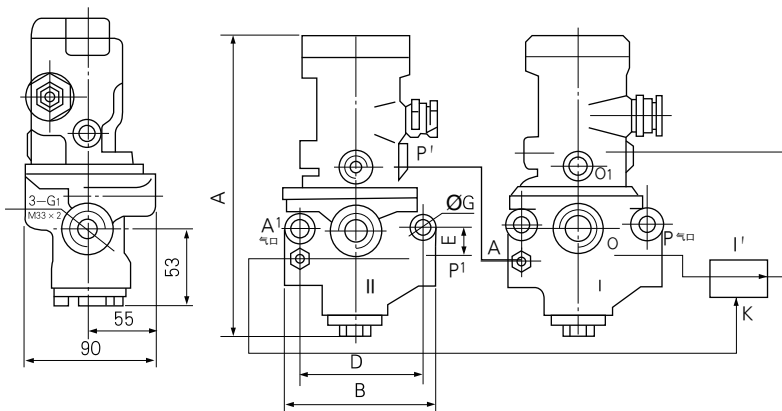
#### 型号注释 Order Code



#### 外形尺寸 Outlook & Dimension

型号 type	DF4-20(25)
公称口径 normally dia(mm)	Ø20(25)
接口螺纹 pipe size	G3/4(G1)

A	B	C	D	E	F	ØG
195	113	90	82	24	51	9



#### 技术参数 Specification

流量 Flow rate(m³/h)	30
有效截面积S值 Effective sectional area S valve(mm²)	120 (190)
联锁阀额定工作压力 Working pressure(MPa)	0.2~0.6
电磁阀工作电压 Voltage(V)	AC:220,110,36, DC:110,24 电磁铁工作电压为额定电压的85~105%时可靠工作。 Electril magnet operates when its working voltage is 85~105% of nominal voltage
联锁阀延时性能(秒) Time retardation (sec)	≥0.02
环境温度 Ambient temperature(°C)	-5~50
工作介质 Working medium	经净化并含有油雾的气体 filtered lubricated air
联锁阀工作寿命(万次)Working life (10K times)	150